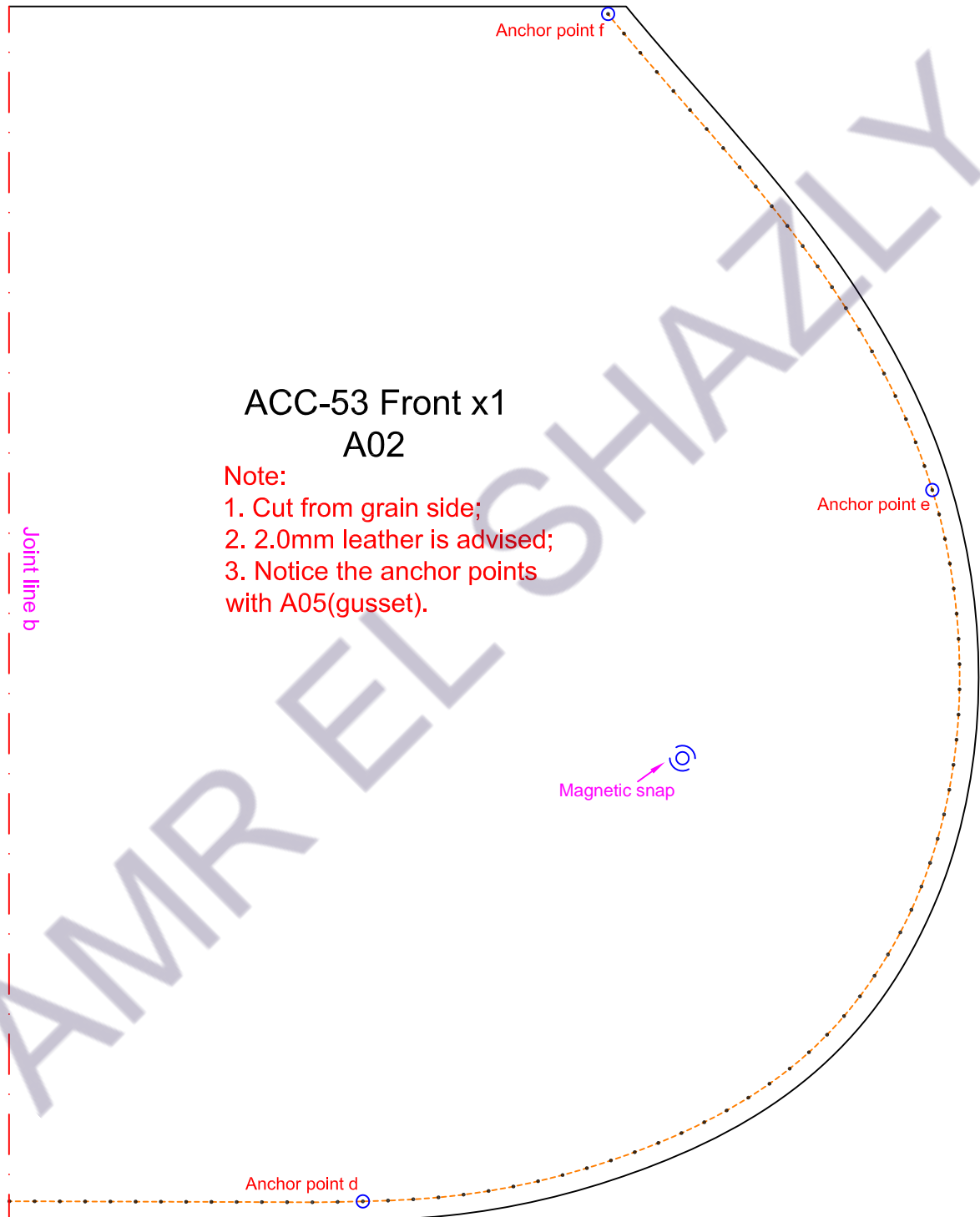


ACC-53 Front x1
A02

Note:

1. Cut from grain side;
2. 2.0mm leather is advised;
3. Notice the anchor points with A05(gusset).

Joint line b



ACC-53 Front x1
A02

Note:

1. Cut from grain side;
2. 2.0mm leather is advised;
3. Notice the anchor points with A05(gusset).

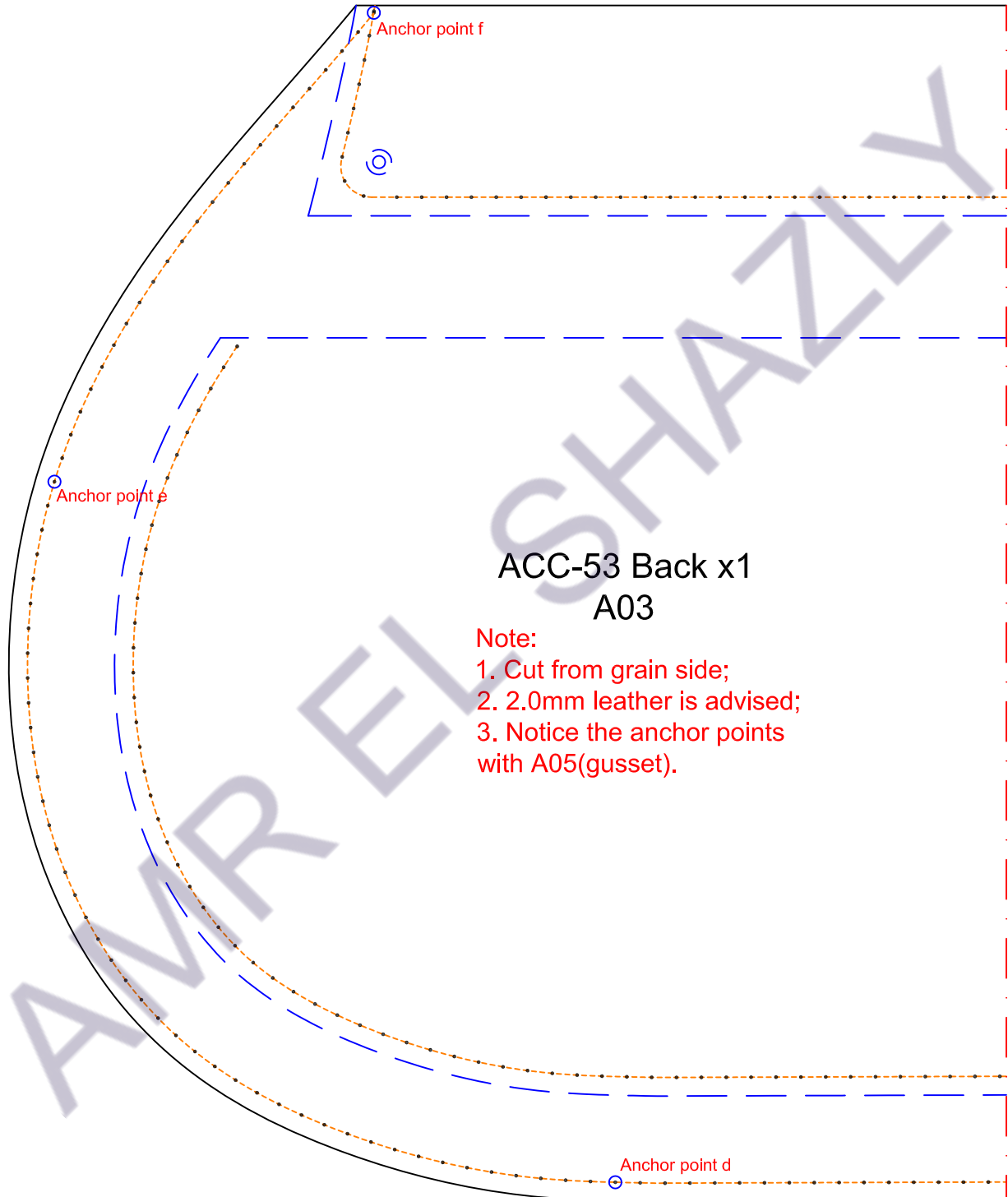
Joint line b

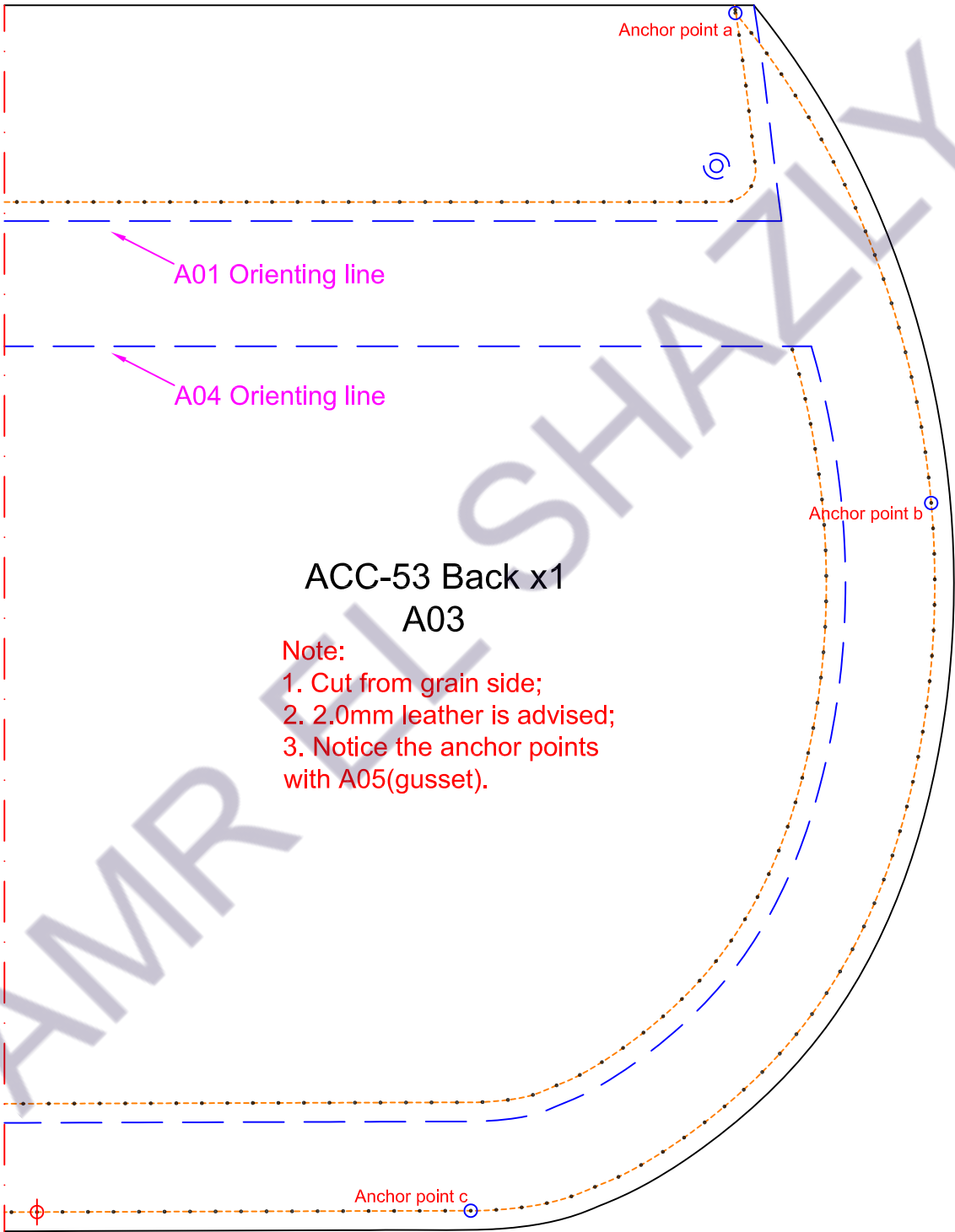
Magnetic snap

Anchor point d

Anchor point f

Anchor point e



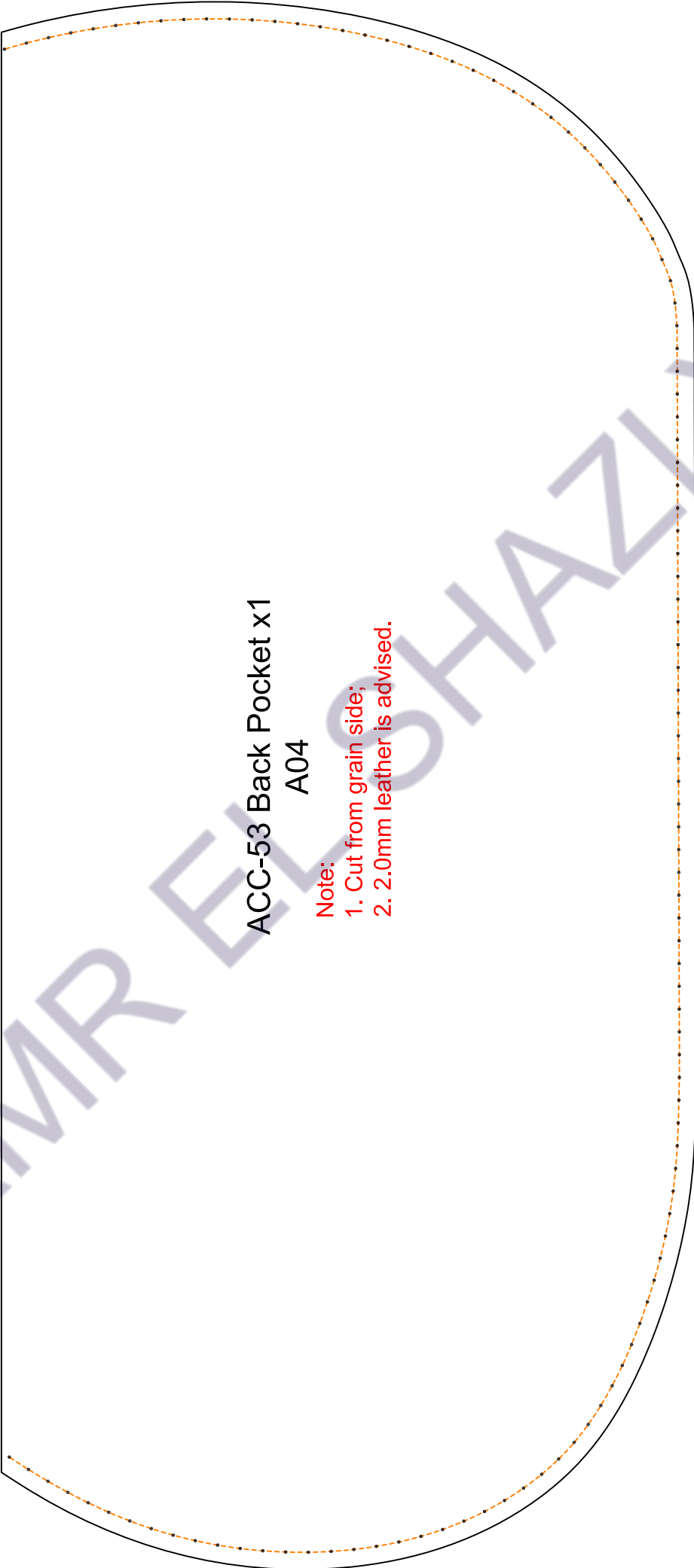
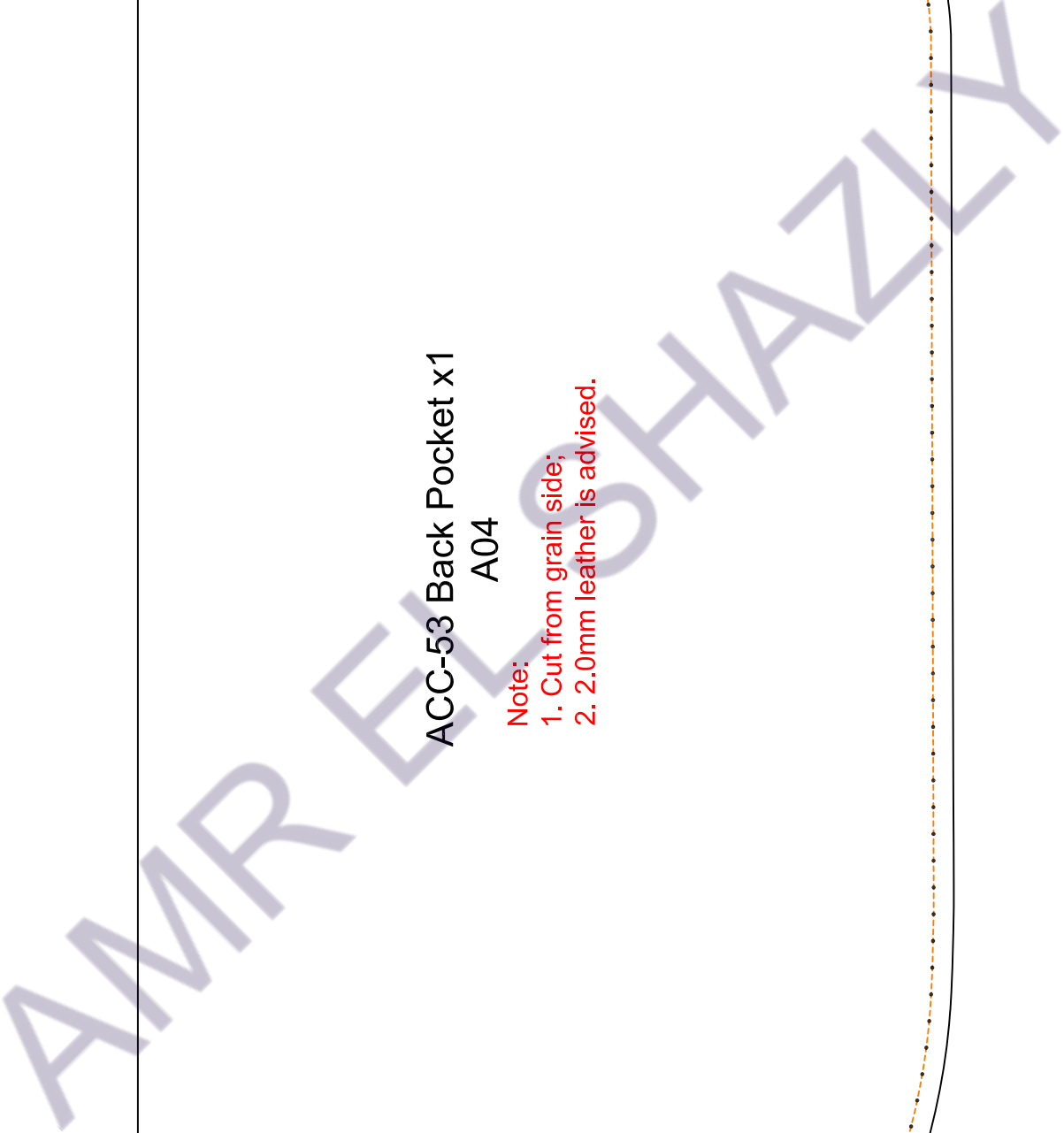


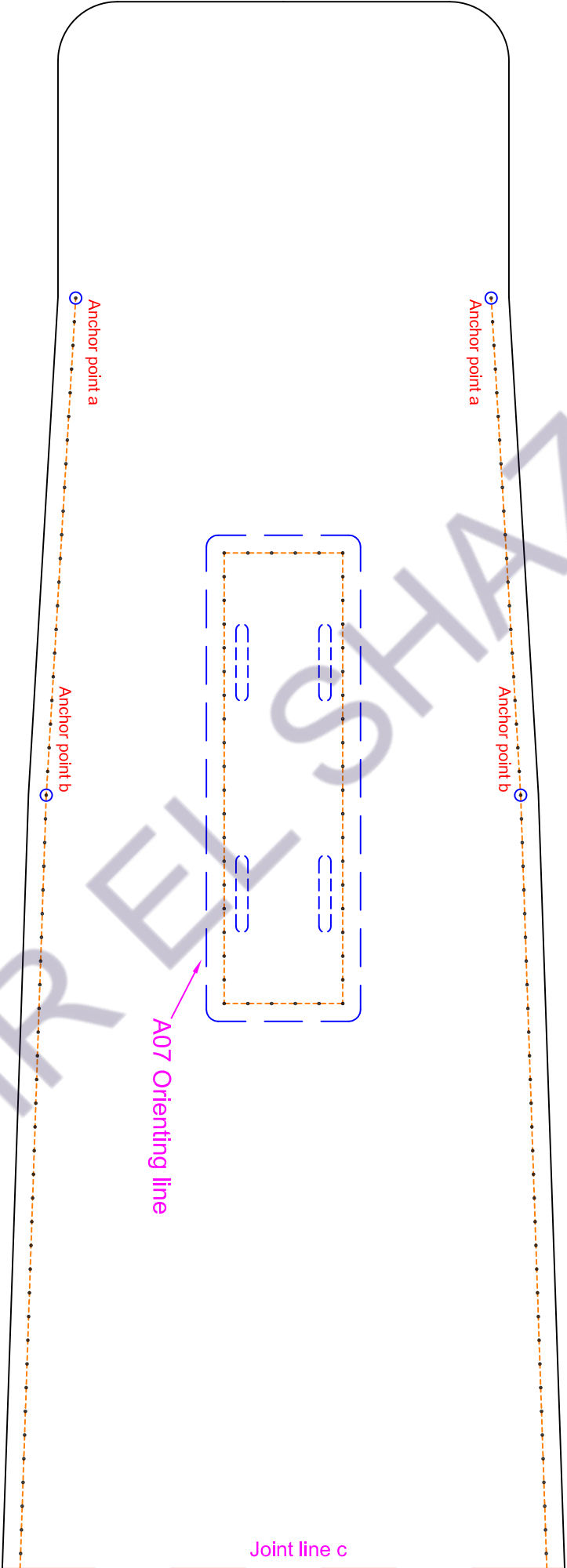
ACC-53 Back x1
A03

- Note:
- 1. Cut from grain side;
 - 2. 2.0mm leather is advised;
 - 3. Notice the anchor points with A05(gusset).

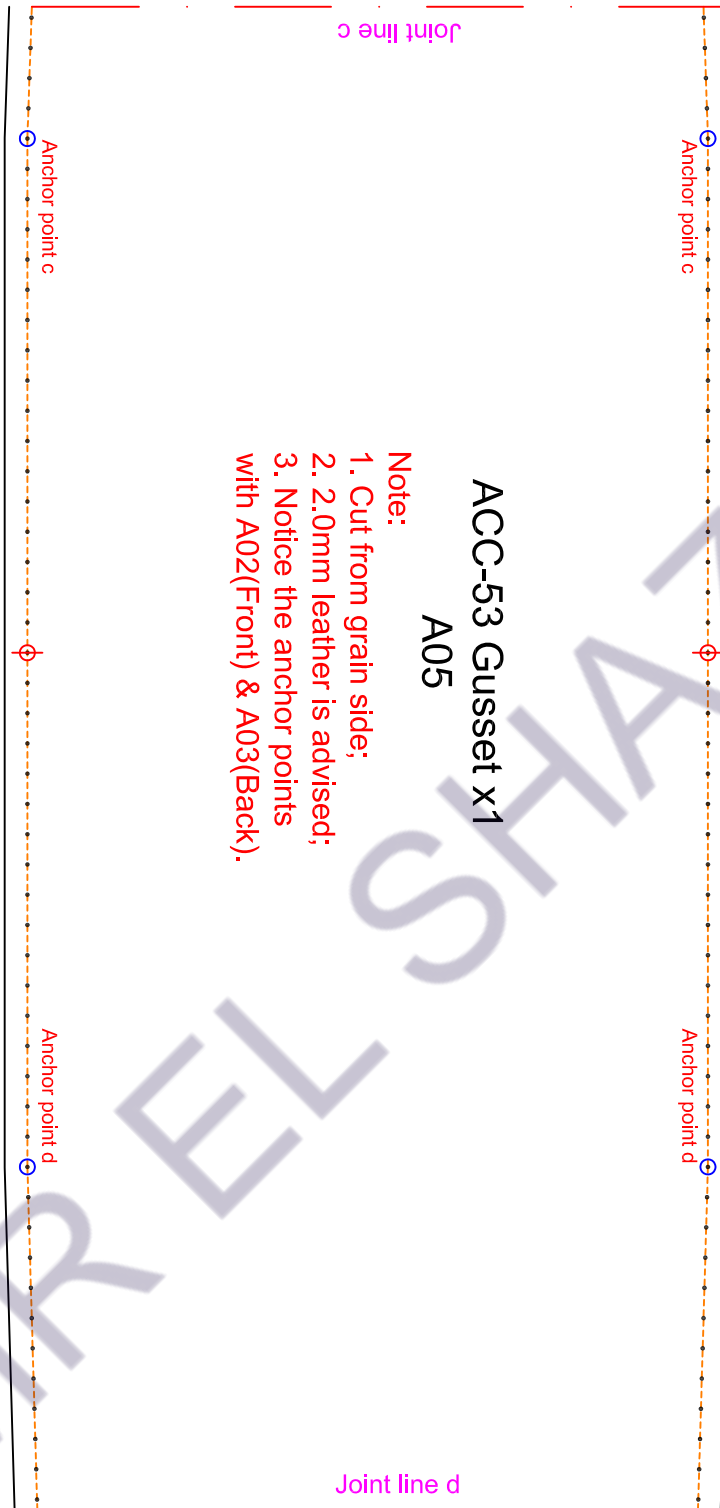
ACC-53 Back Pocket x1
A04

- Note:
- 1. Cut from grain side;
 - 2. 2.0mm leather is advised.

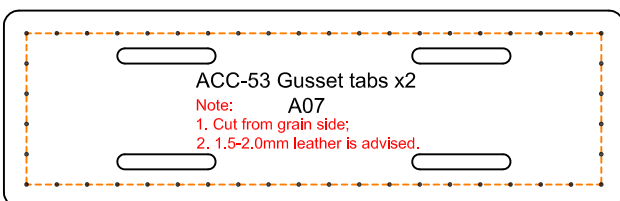




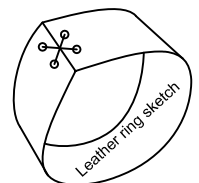
AMR EL SHAKLY

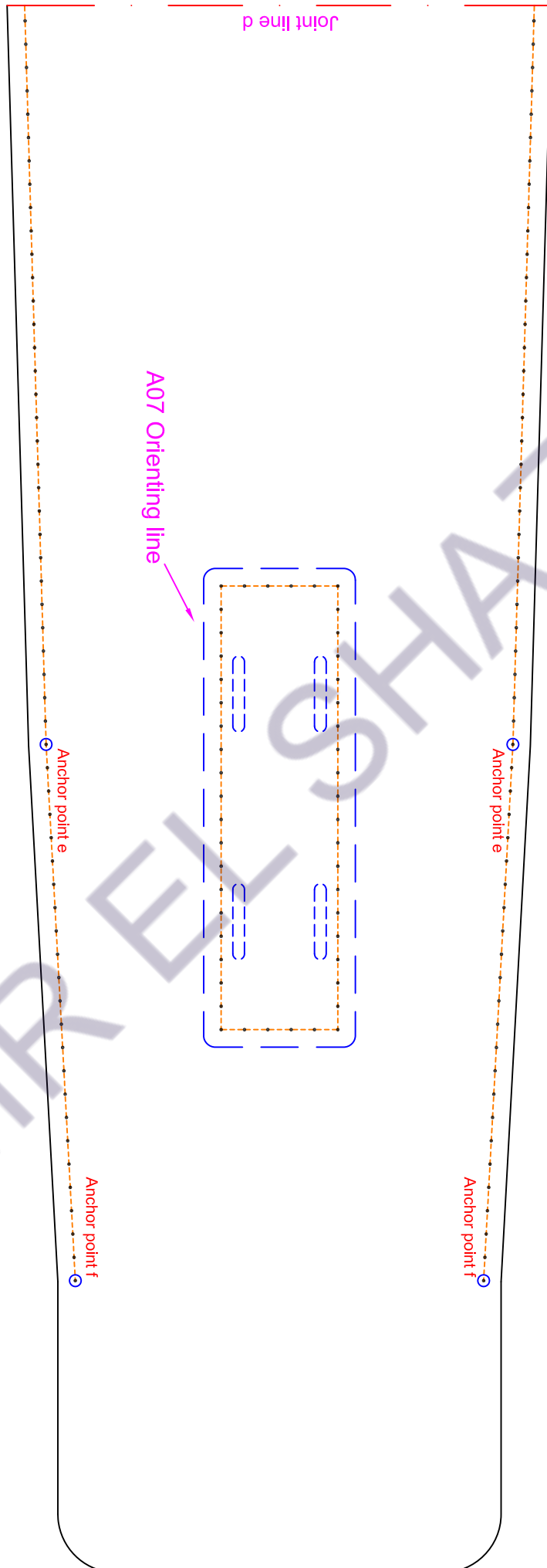


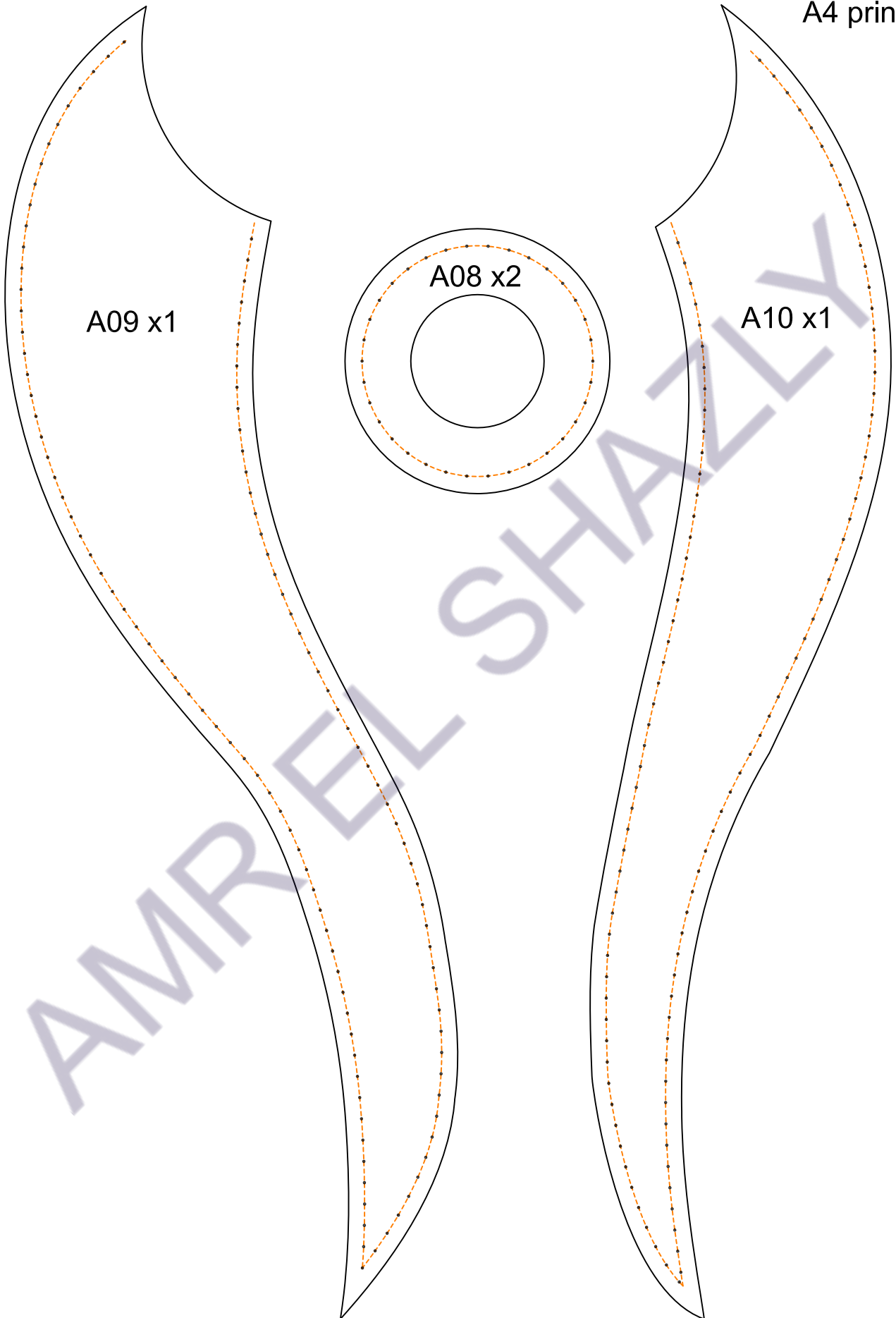
- Note:
1. Cut from grain side;
 2. 2.0mm leather is advised;
 3. Notice the anchor points with A02(Front) & A03(Back).

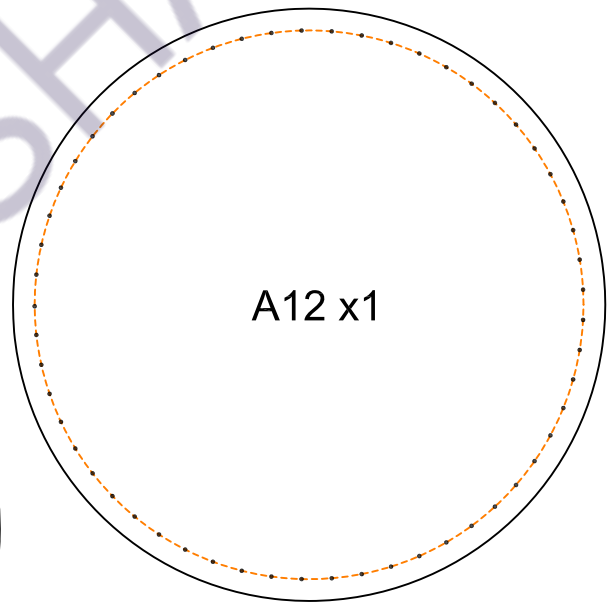
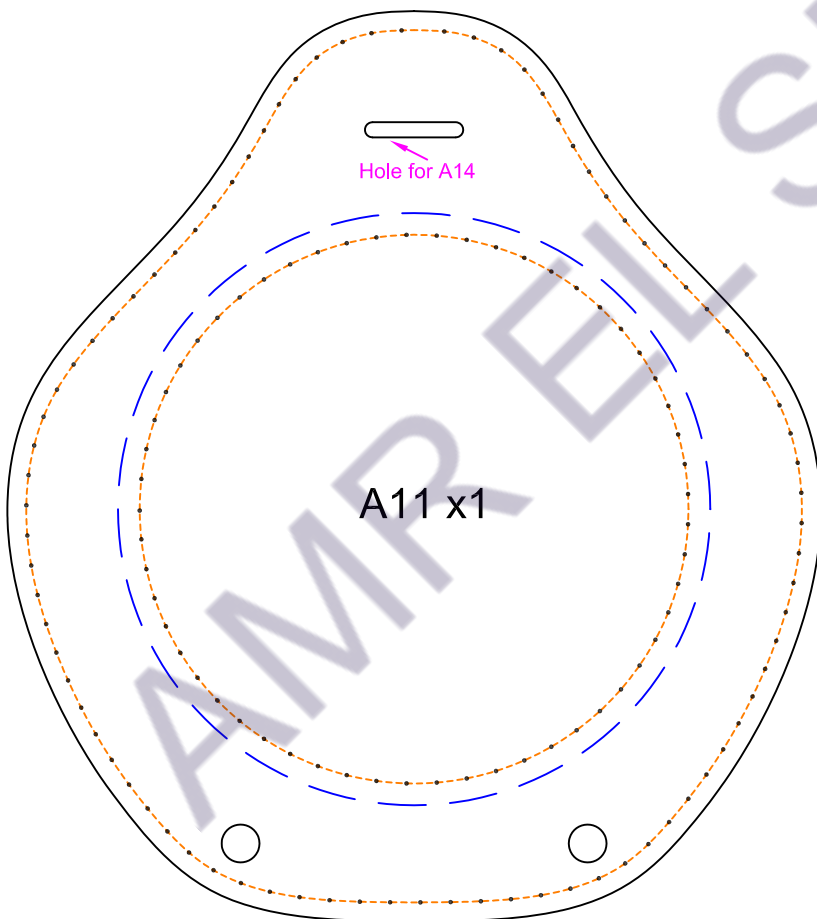
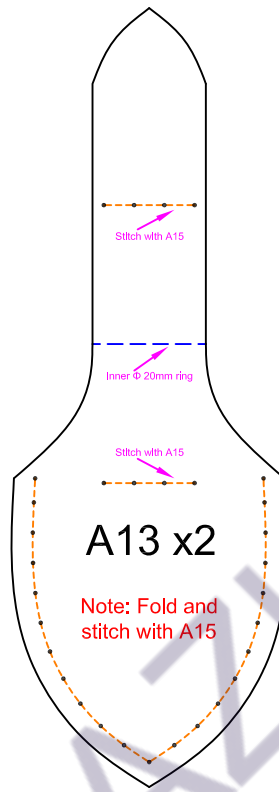
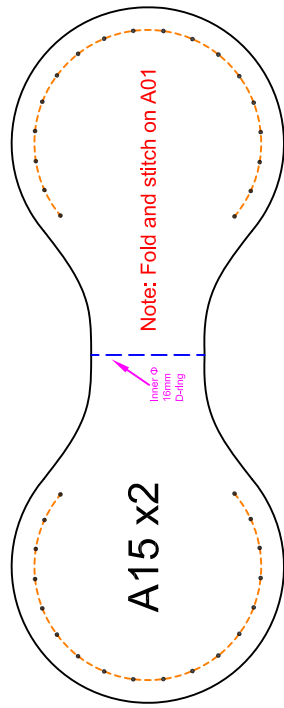


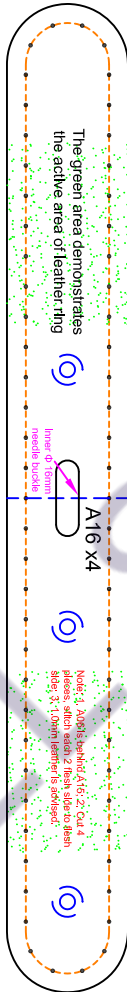
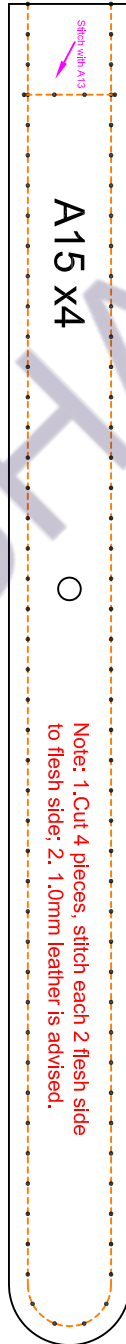
Leather ring for A07 x4

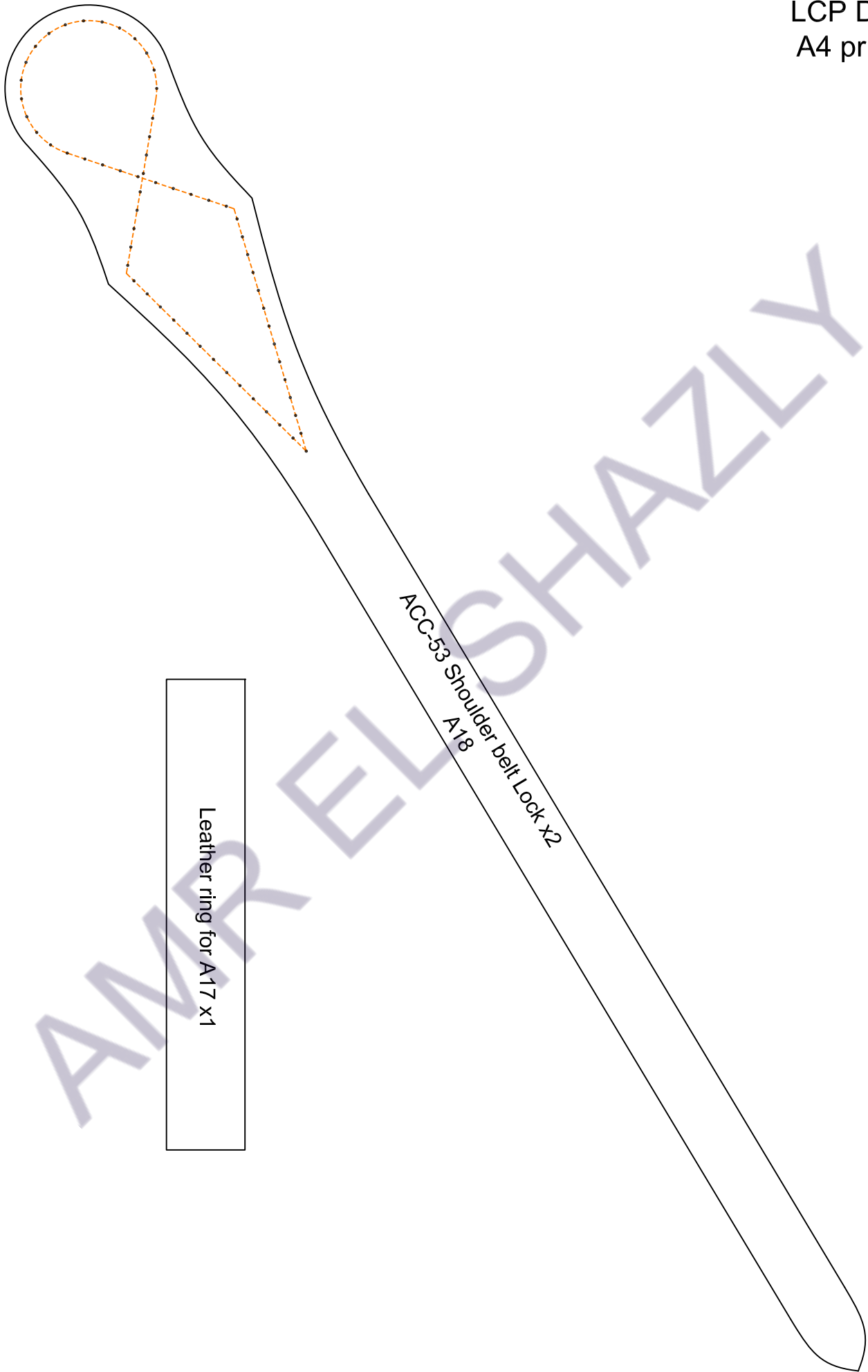








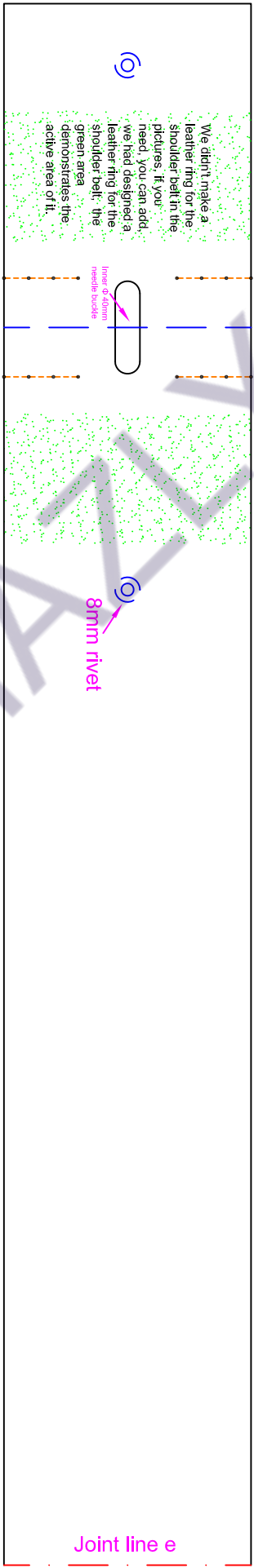




Leather ring for A17 x1

ACC-53 Shoulder belt Lock x2
A18

AMR ELEPHAZLY



ACC-53 Shoulder belt A x1
A17

